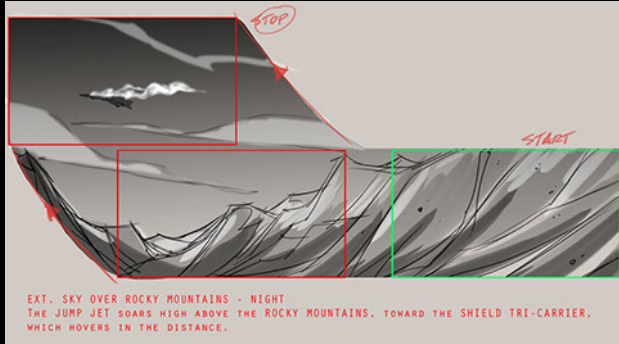


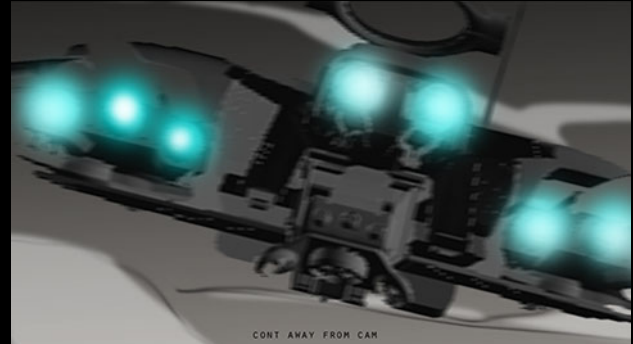
fade in



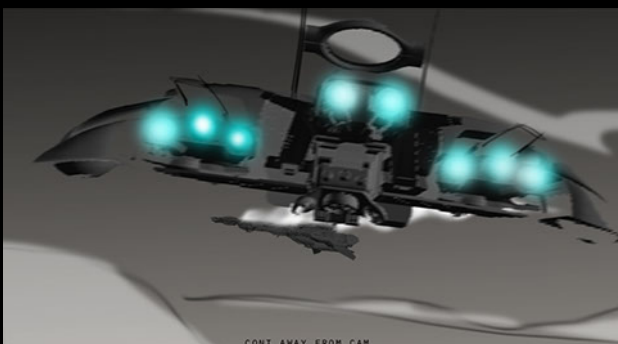
EXT. SKY OVER ROCKY MOUNTAINS - NIGHT
THE JUMP JET SOARS HIGH ABOVE THE ROCKY MOUNTAINS, TOWARD THE SHIELD TRI-CARRIER,
WHICH HOVERS IN THE DISTANCE.



START IN 4/4 AND 1/2 FROM CLIP



CONT AWAY FROM CAM



CONT AWAY FROM CAM



34 SHE-HULK (O.S.)
HULKS TO SHIELD TRI-CARRIER,
THIS IS SMASH JUMP JET, INCOMING, OVER.



34 SHE-HULK (O.S.)
HULKS TO SHIELD TRI-CARRIER,
THIS IS SMASH JUMP JET, INCOMING, OVER.



34 SHE-HULK (O.S.)
HULKS TO SHIELD TRI-CARRIER,
THIS IS SMASH JUMP JET, INCOMING, OVER.



34 SHE-HULK (O.S.)
HULKS TO SHIELD TRI-CARRIER,
THIS IS SMASH JUMP JET, INCOMING, OVER.



INT. JUMP JET - COCKPIT - MOVING - CONTINUOUS
SHE-HULK PILOTS, HULK IS IN THE CO-PILOT'S CHAIR. RED, SKAAR
AND A-BOMB SIT BEHIND THEM.

34 SHE-HULK
FURY, DO YOU READ?



35 A-BOMB
SOMEONE WANNA TELL ME WHY
WE'RE HEADED...



35 A-BOMB
...TOWARD THE GUYS...



35 A-BOMB
LOCK US UP AND THROW AWAY...



35 A-BOMB
...THE KEY?



36 HULK
CAUSE WHOEVER'S IMPERSONATING
US...



36 HULK
...HAS ACCESS TO A FLYING FORTRESS...



36 HULK
...THAT
CAN LEVEL AN ENTIRE CITY.



36 HULK
...THAT
CAN LEVEL AN ENTIRE CITY.



BG PAN

37 RED
EITHER THAT OR...



BG PAN

37 RED
THAT FOLLOWS "FAKE US ATTACK" FOOTAGE
WAS A FOX.



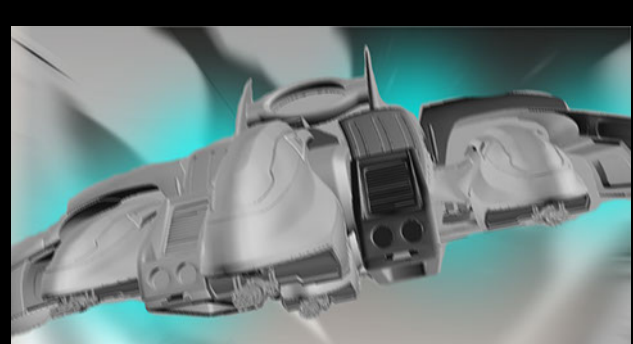
BG PAN

37 RED
...AN' BE HE WALKIN' STRAIGHT....

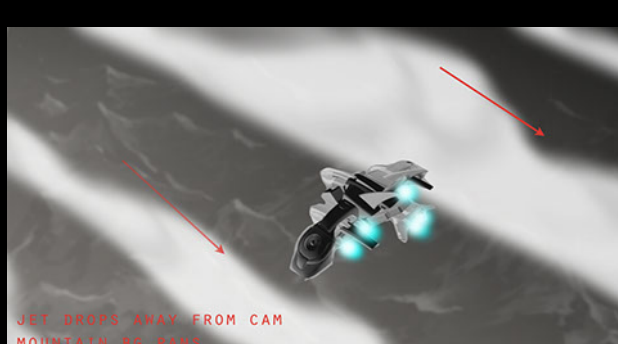


BG PAN

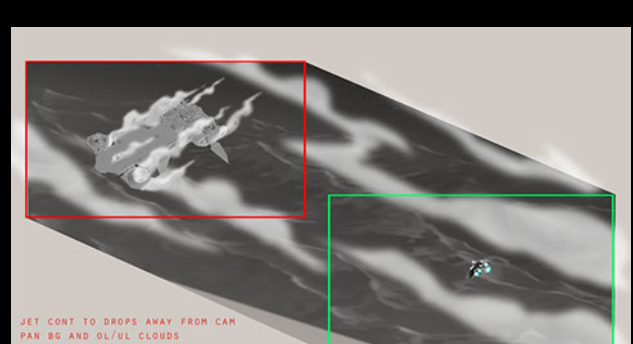
37 RED
... INTO A TRAP.



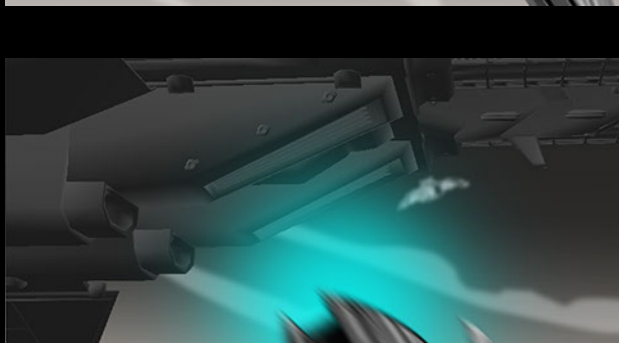
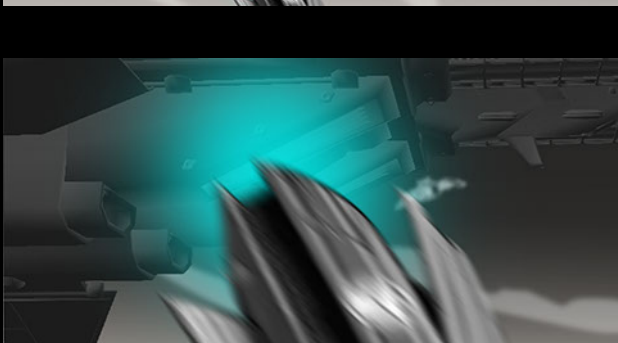
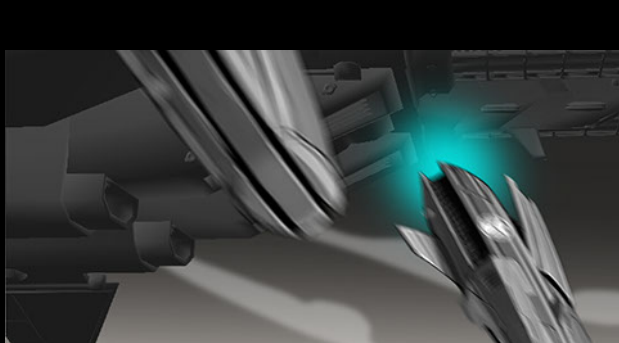
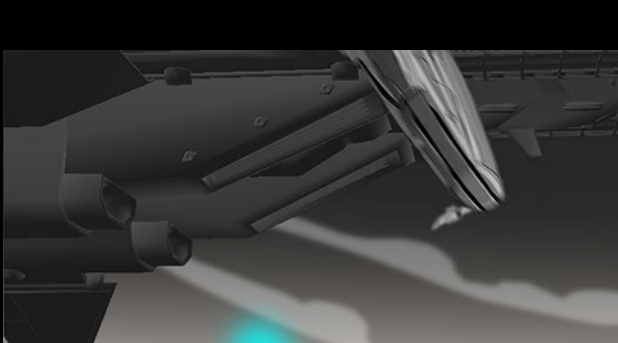
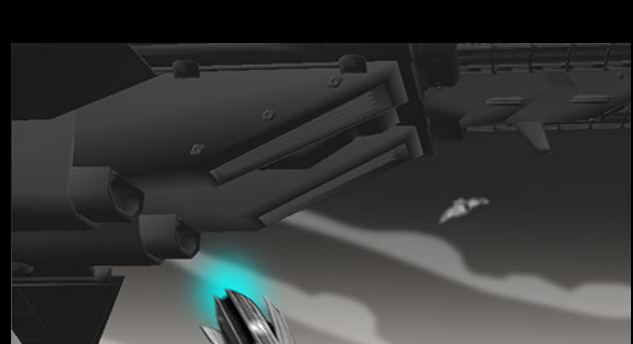
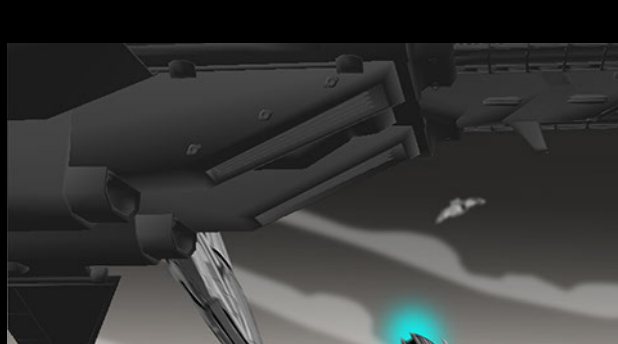
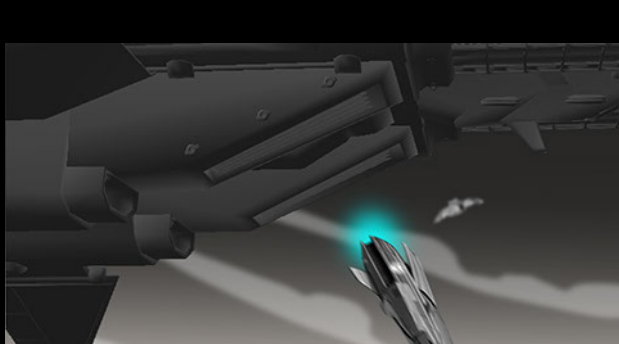
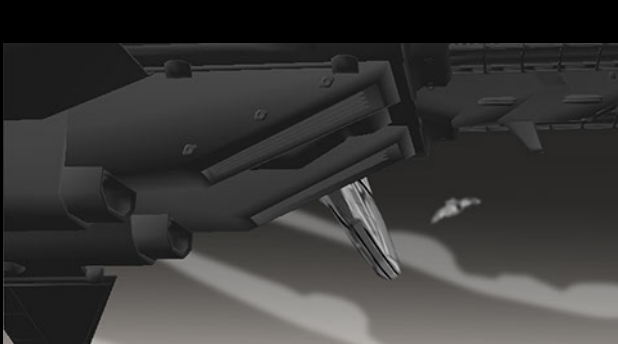
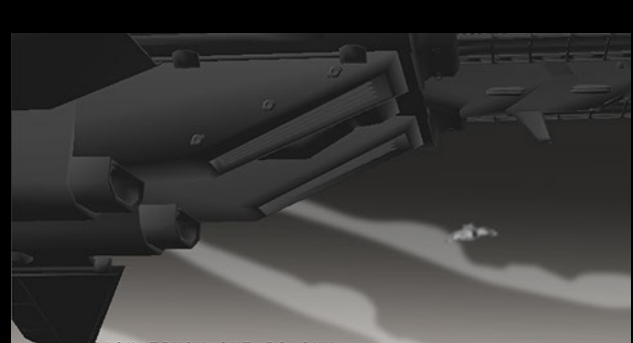
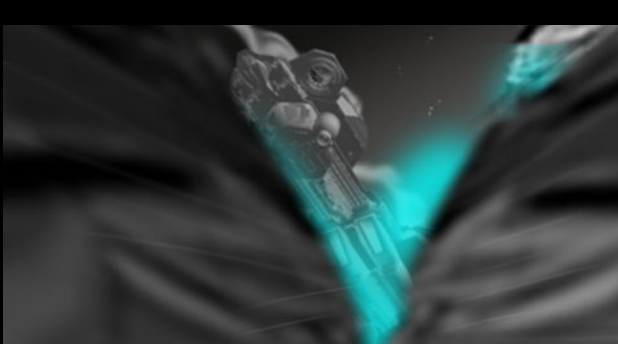
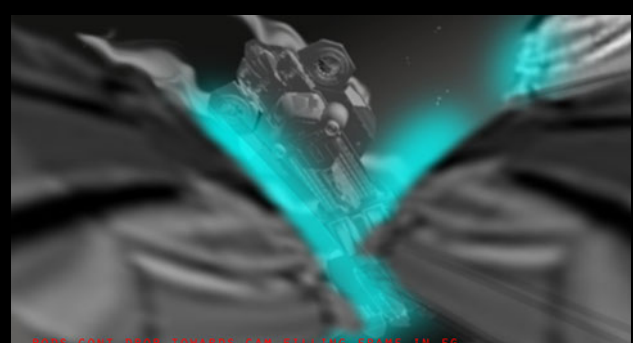
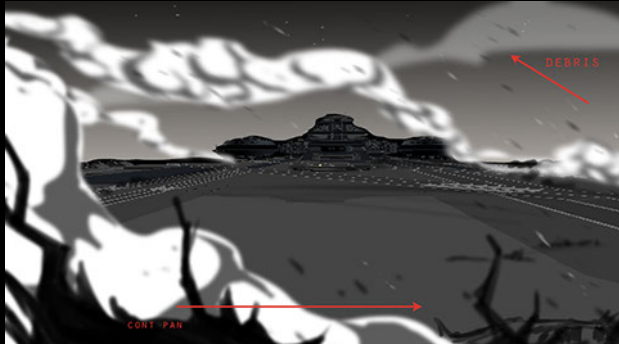
JET DROPS AWAY FROM CAM
MOUNTAIN BG PANS
CLOUD GL/UL PANS

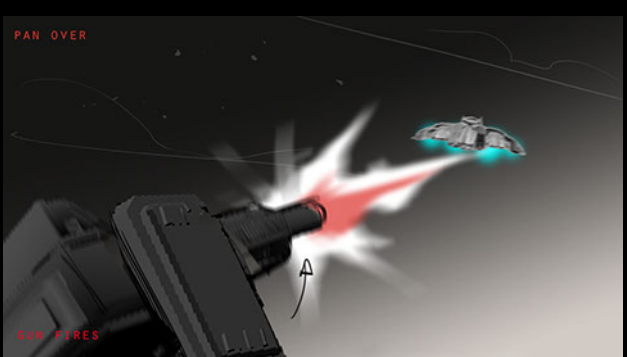
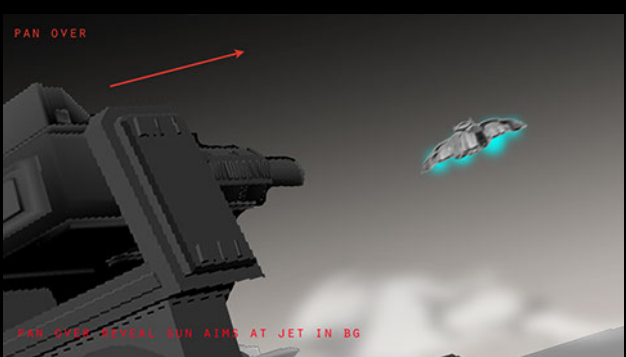
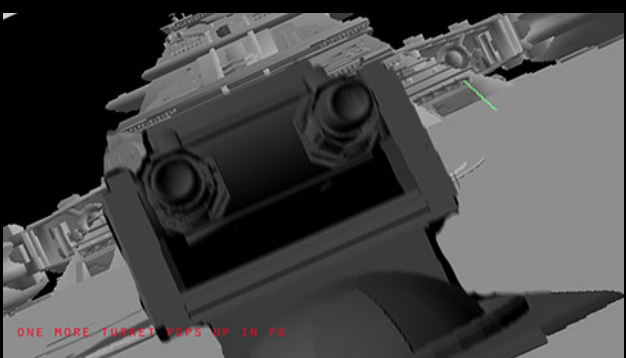
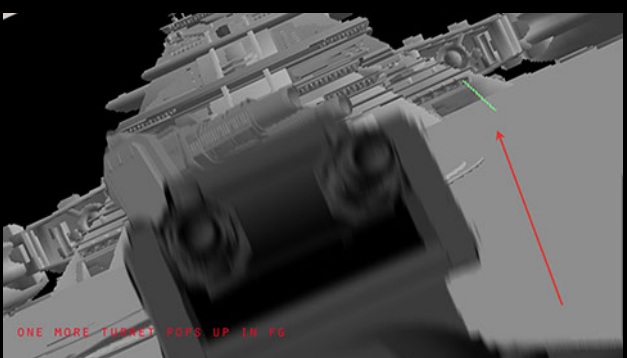
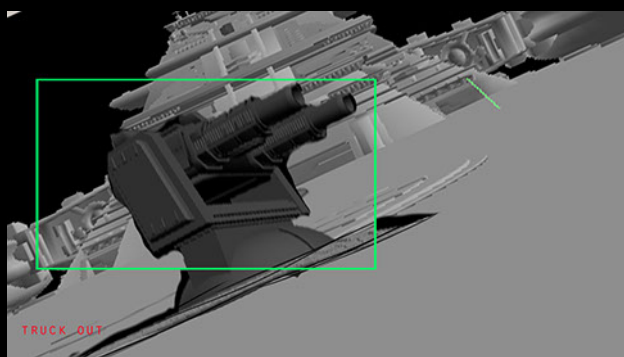
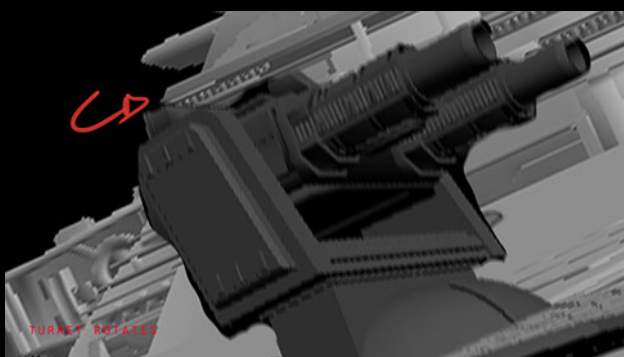
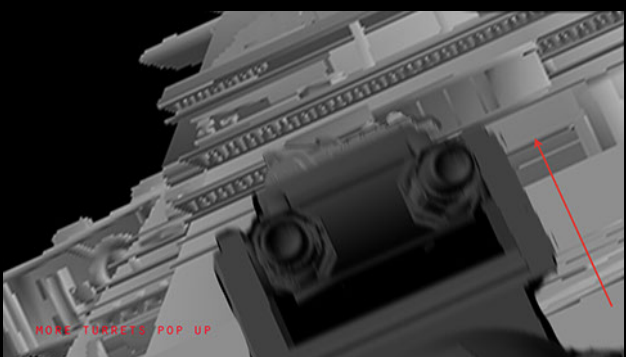
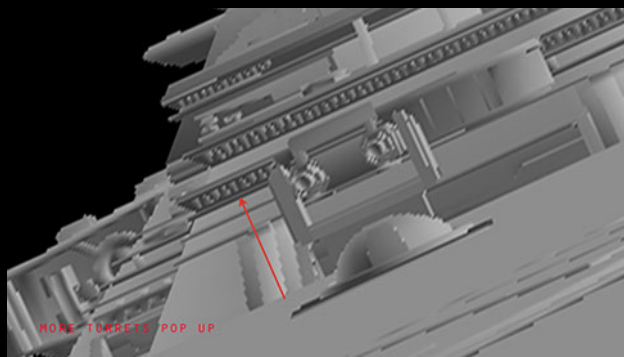
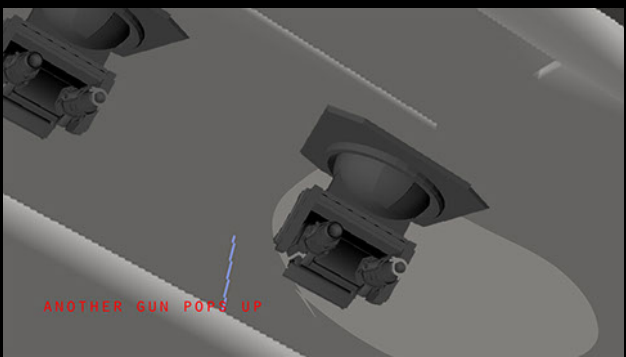
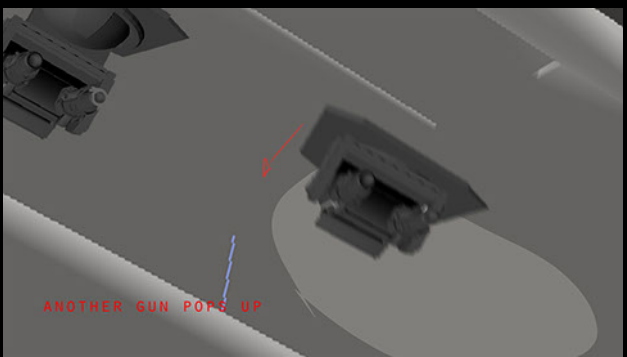
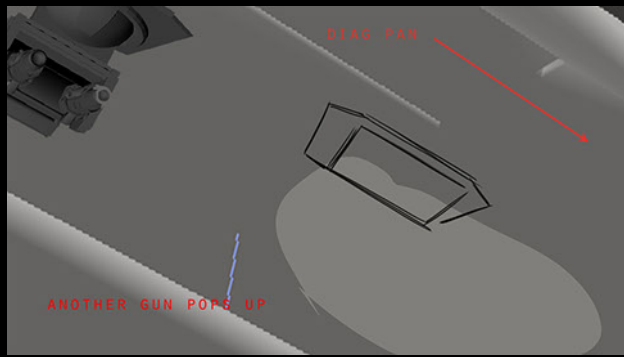
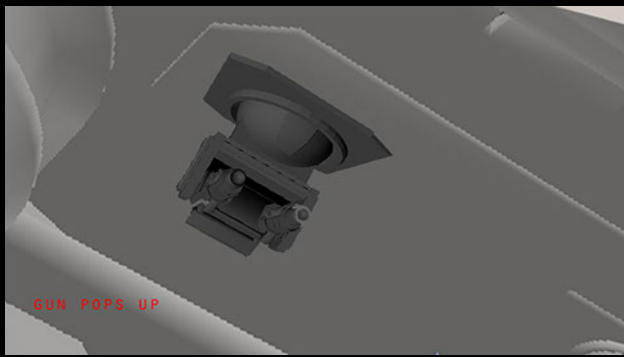
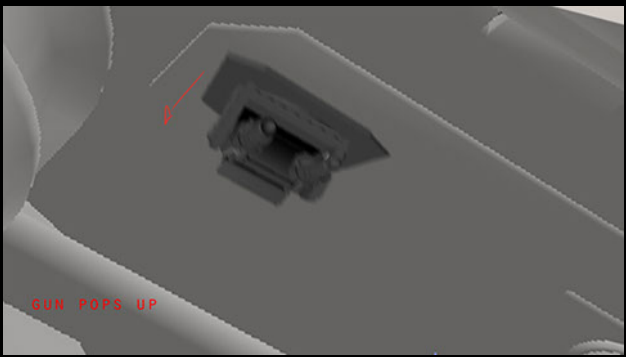
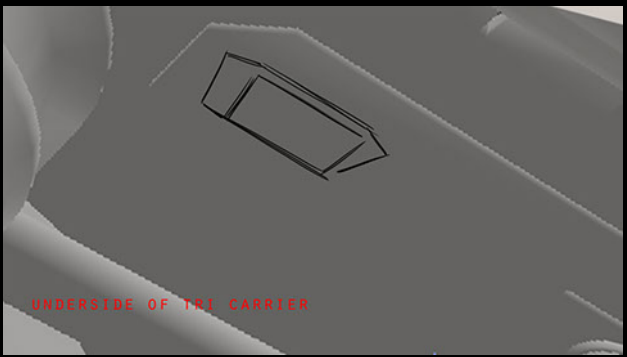
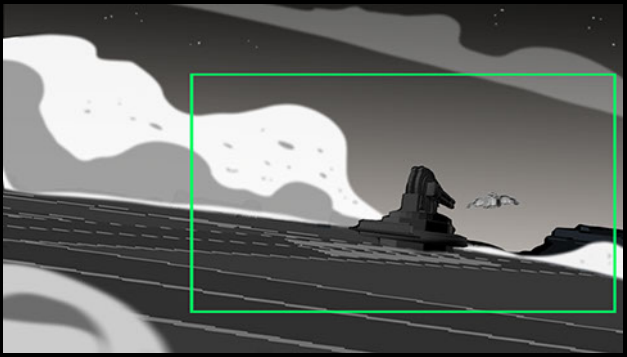
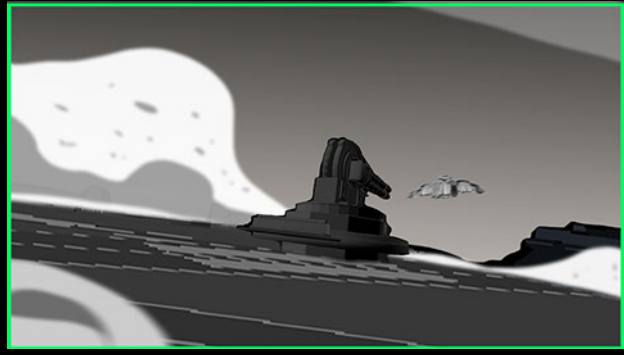
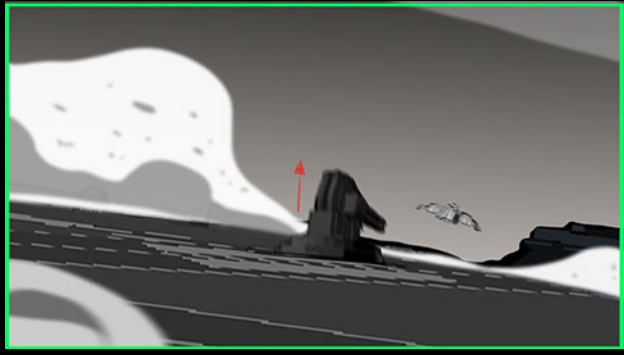


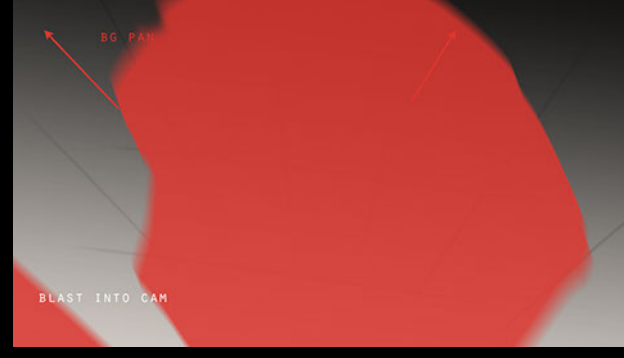
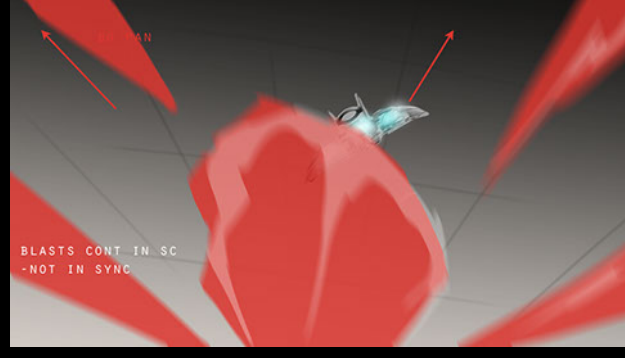
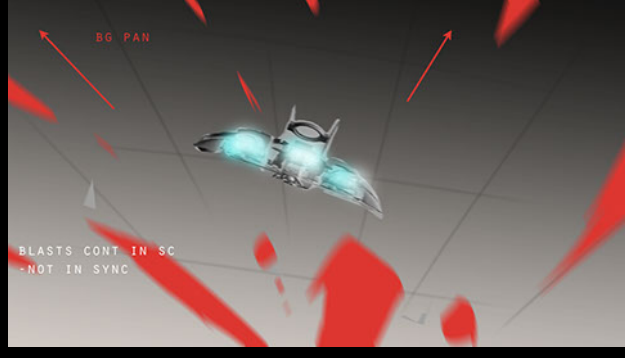
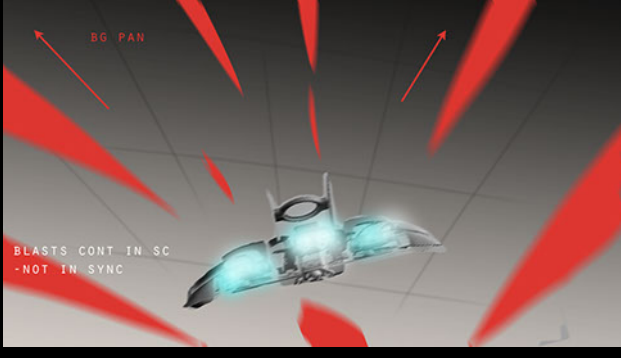
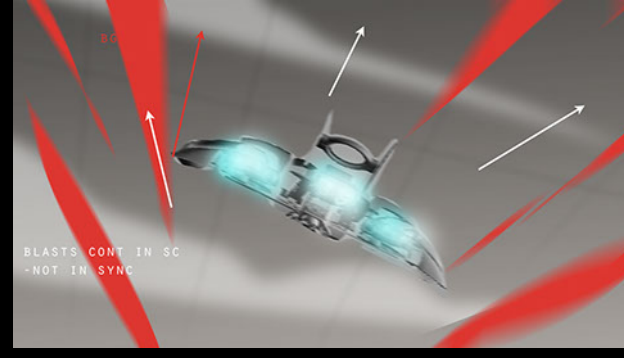
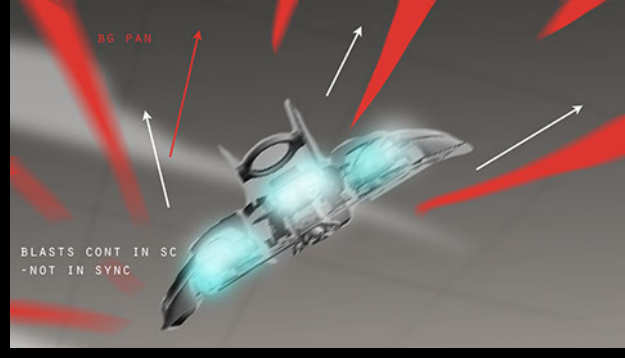
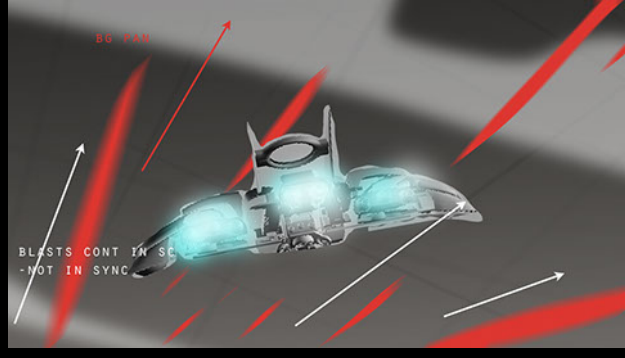
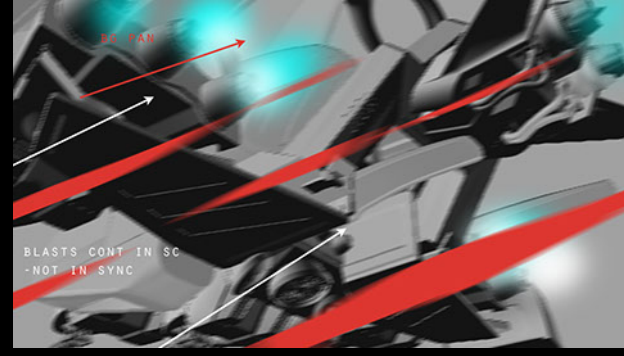
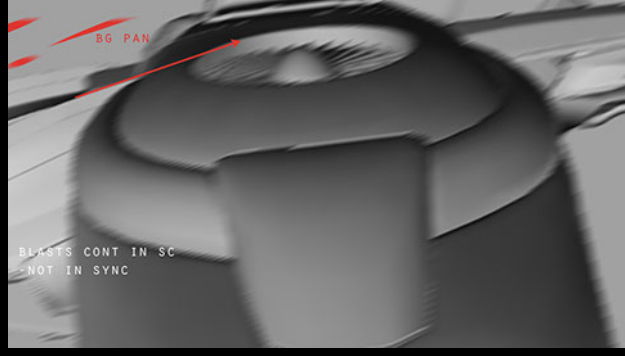
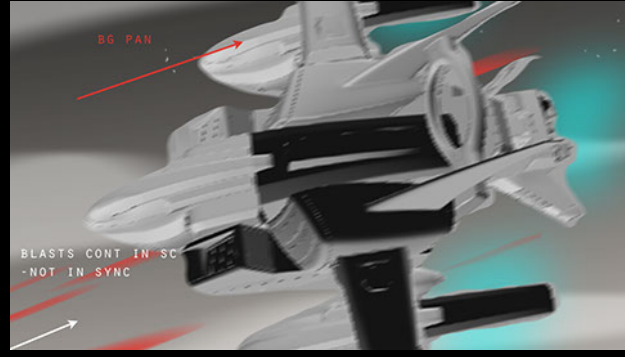
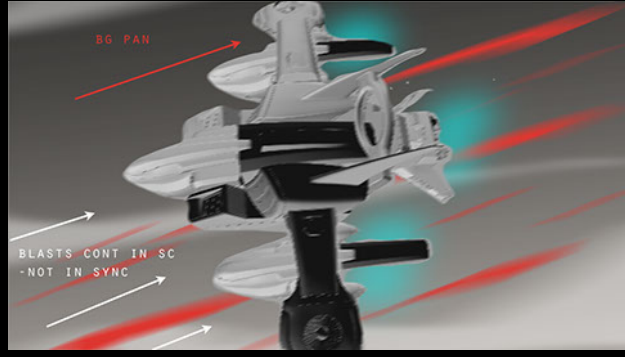
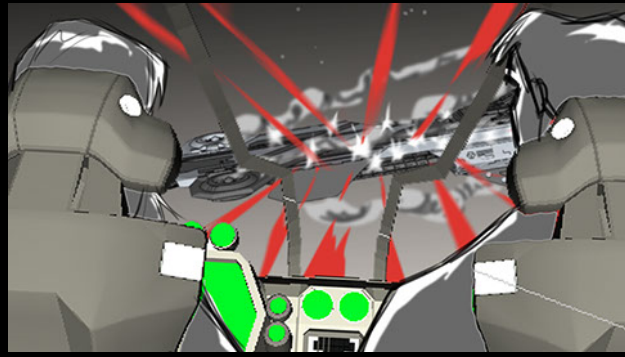
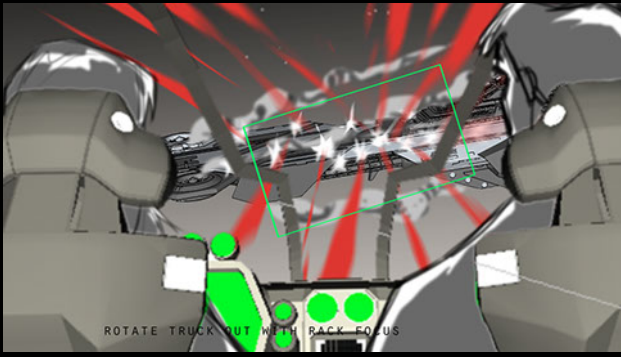
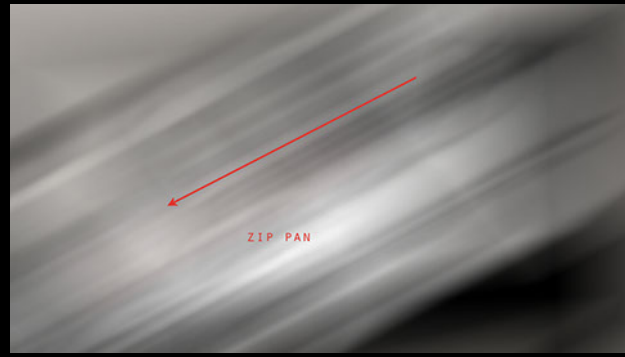
JET DROPS AWAY FROM CAM
MOUNTAIN BG PANS
CLOUD GL/UL PANS

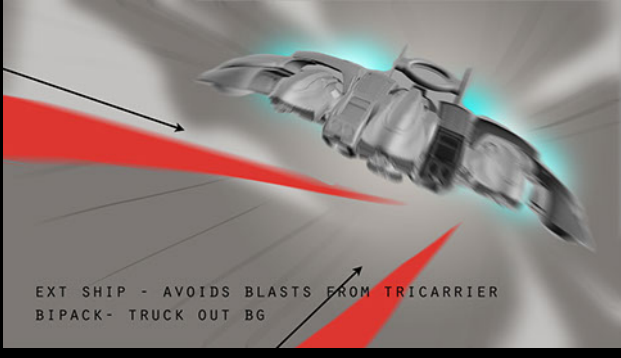
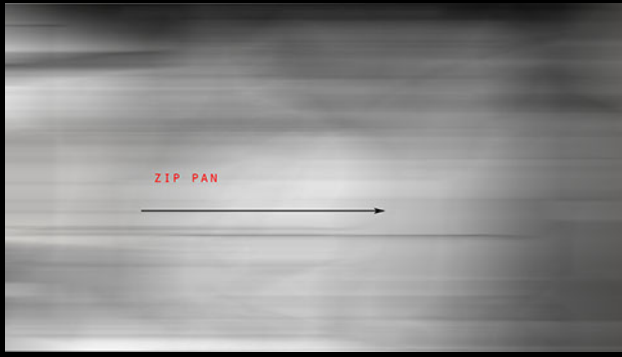
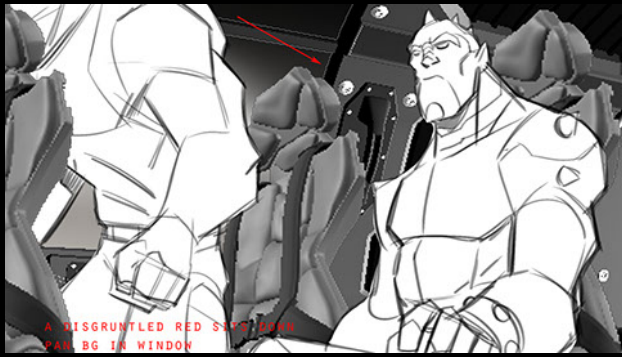


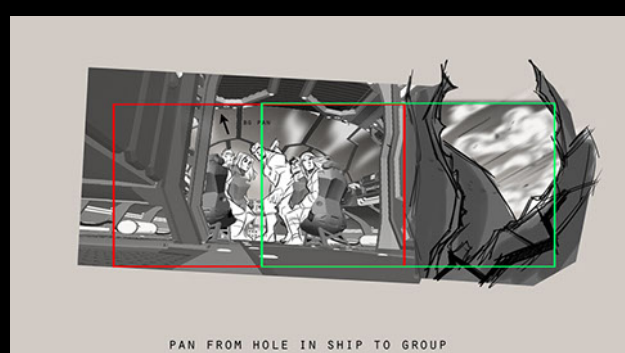
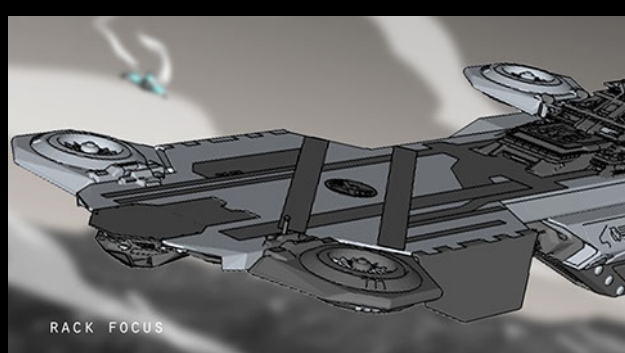
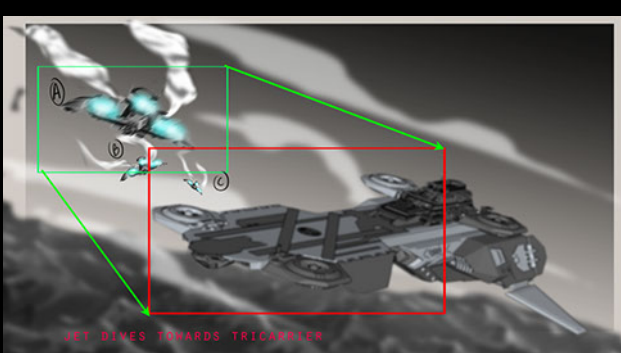
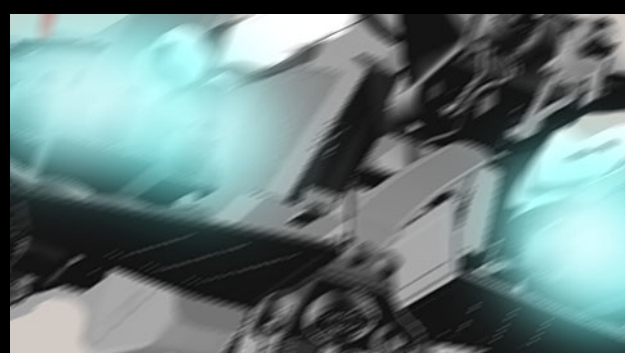
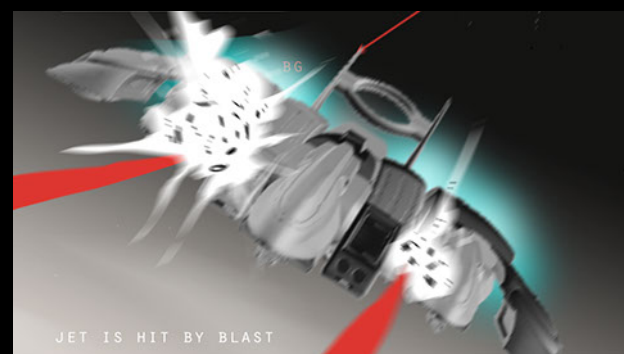
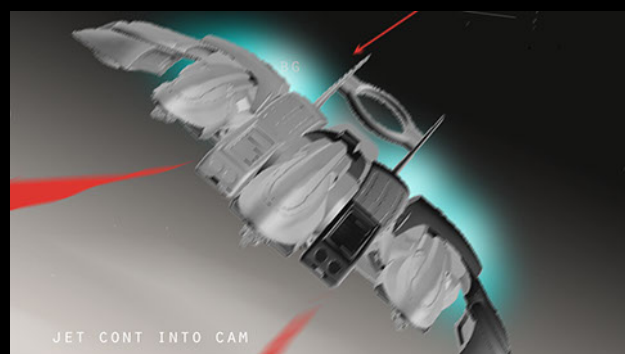
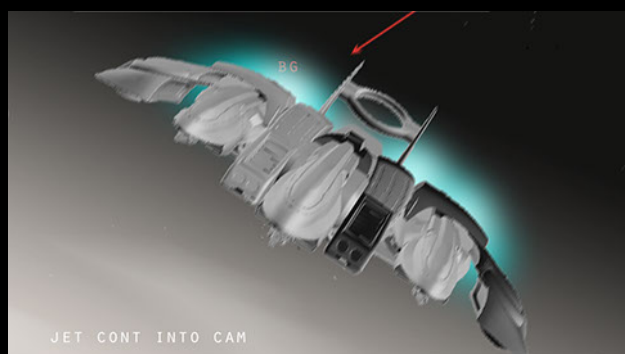
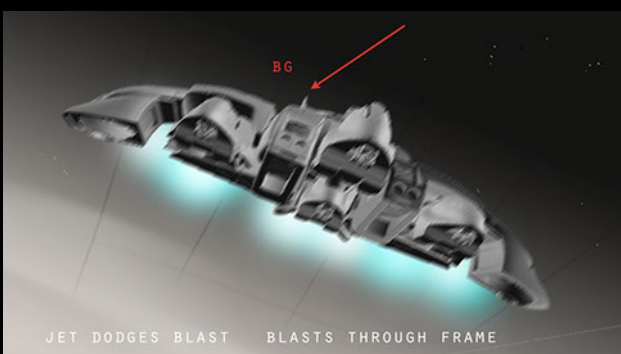
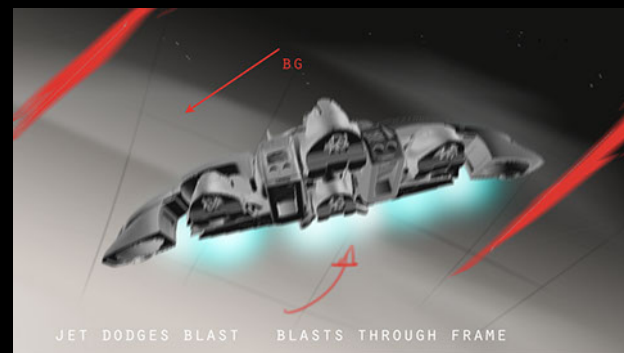
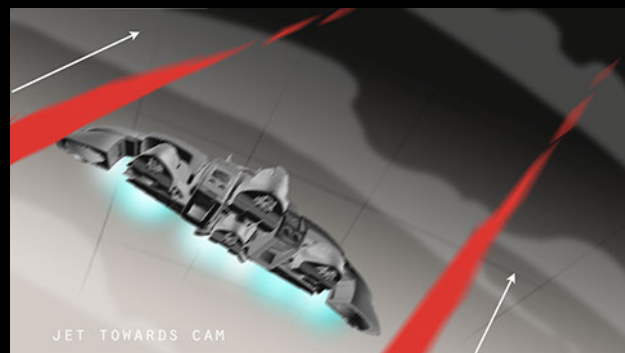
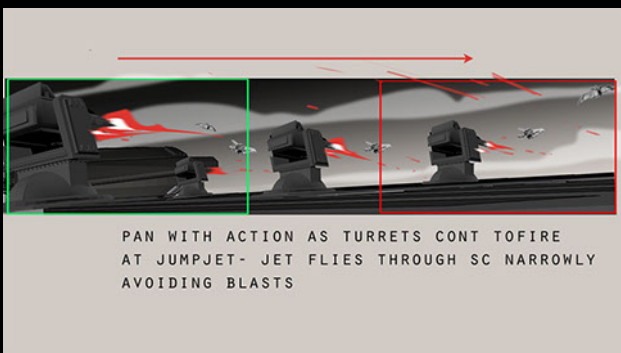
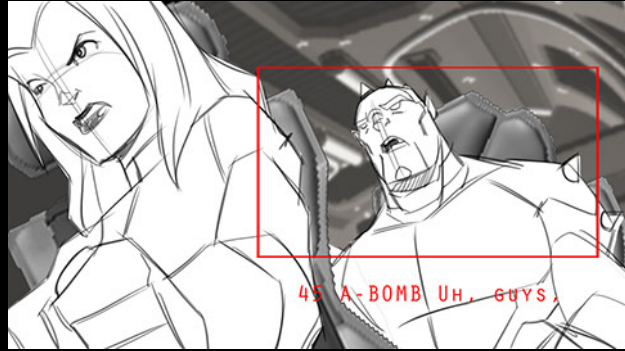
JET CONT TO DROPS AWAY FROM CAM
PAN BG AND GL/UL CLOUDS
PAN PAST JET TO DAMAGED
TRI-CARRIER WITH ANIMATED SMOKE FX





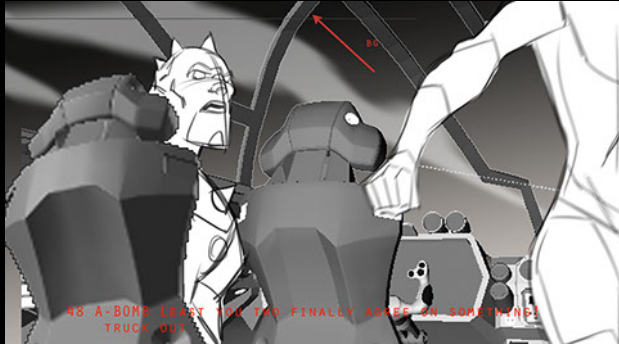








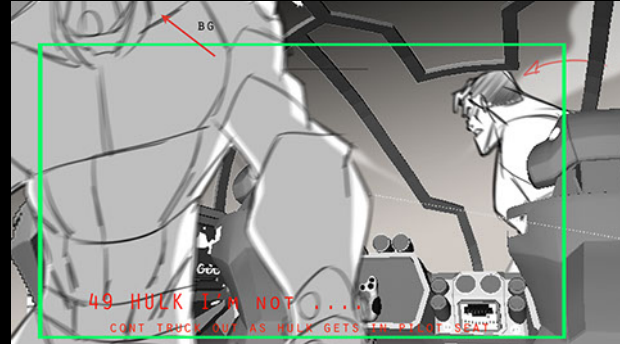
47 SHE-HULK RED ABANDON JET



48 A-BOMB LEAST YOU TOO FINALLY AGREE ON SOMETHING! TRUCK OUT



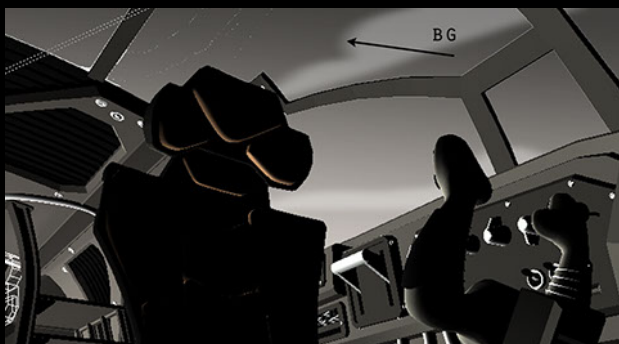
48 A-BOMB LEAST YOU TOO FINALLY AGREE ON SOMETHING! TRUCK OUT



49 HULK IS A NOT... CONT TRUCK OUT AS HULK GETS TO MAIN SEAT



49 HULK IS GIVING UP THE JET COCKPIT TRUCK OUT AS HULK GETS TO MAIN SEAT



BG



BG



49 HULK IT'S OUR LAST ONE!



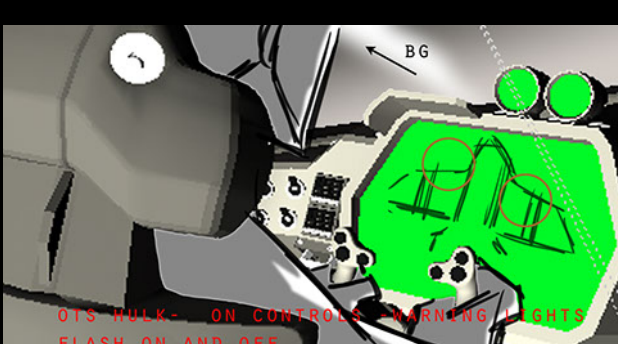
BG



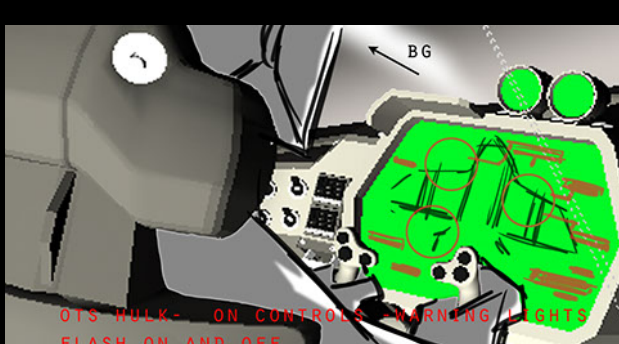
BG



BG

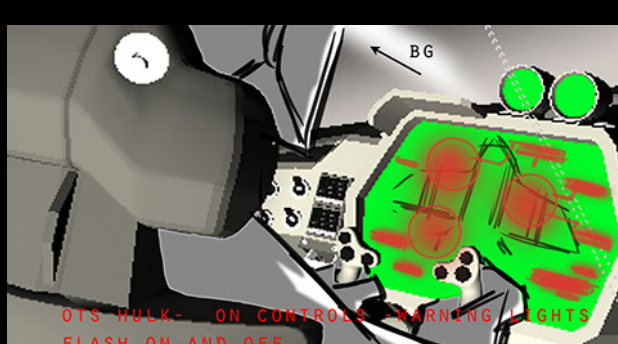


OTS WULK- ON CONTROLS WARNING LIGHTS FLASH ON AND OFF



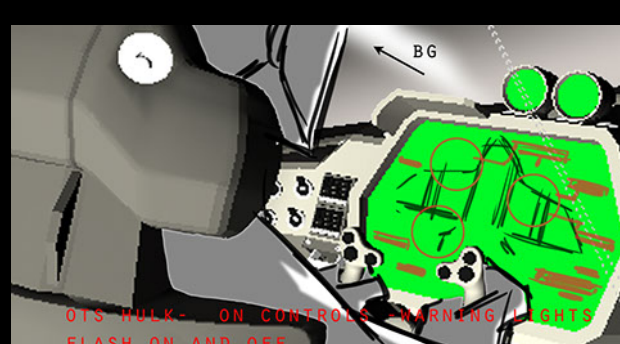
BG

OTS WULK- ON CONTROLS WARNING LIGHTS FLASH ON AND OFF



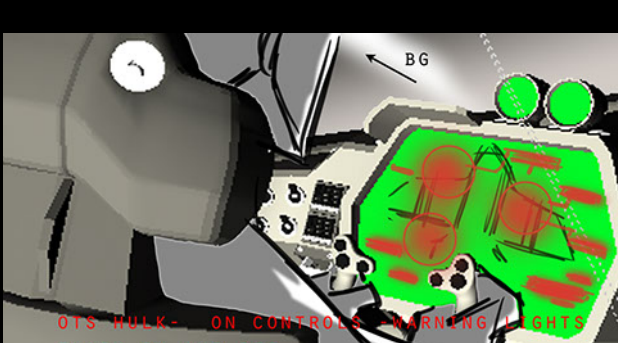
BG

OTS WULK- ON CONTROLS WARNING LIGHTS FLASH ON AND OFF



BG

OTS WULK- ON CONTROLS WARNING LIGHTS FLASH ON AND OFF



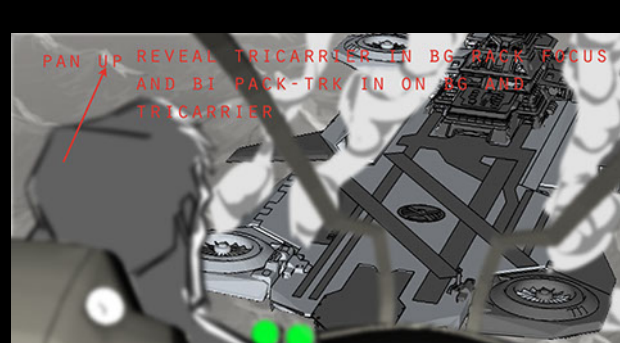
OTS WULK- ON CONTROLS WARNING LIGHTS FLASH ON AND OFF



PAN UP REVEAL TRICARRIER IN BG BACK FOCUS AND BI PACK-TRK IN ON BG AND TRICARRIER



PAN UP REVEAL TRICARRIER IN BG BACK FOCUS AND BI PACK-TRK IN ON BG AND TRICARRIER



PAN UP REVEAL TRICARRIER IN BG BACK FOCUS AND BI PACK-TRK IN ON BG AND TRICARRIER



BI PACK - TRUCK OUT BG JET TOWARDS CAM



BI PACK - TRUCK OUT BG JET TOWARDS CAM



BI PACK - TRUCK OUT BG JET TOWARDS CAM



BI PACK - TRUCK OUT BG JET TOWARDS CAM



JET TOWARDS CAM



50 SHE-HULK THIS IS NO TIME TO BE STUBBORN!



50 SHE-HULK HE NEED TO PAUL SPLIT SCREEN



ZIP PAN TO SKAAR



51 SKAAR SKAAR BAIL!



VERT PAN W/ SKAAR AS HE STANDS

